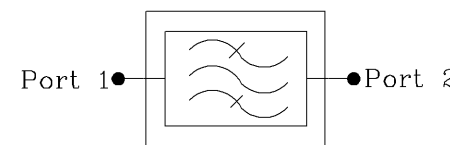
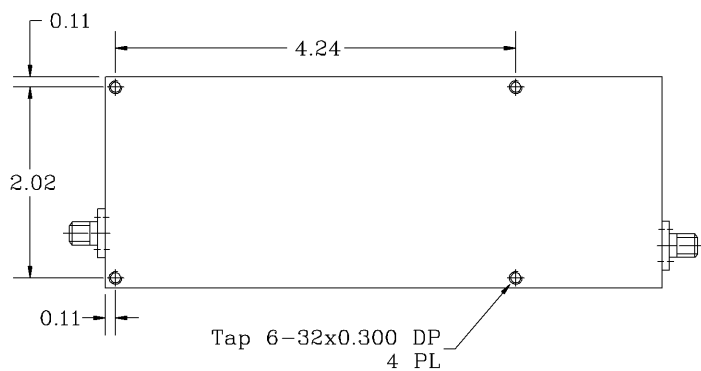
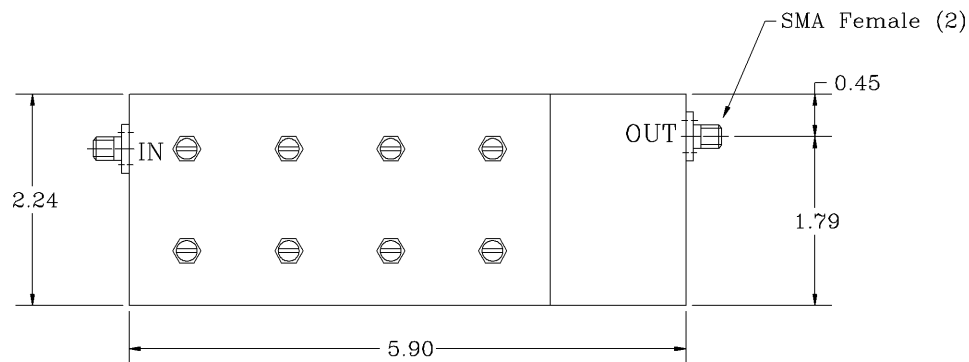
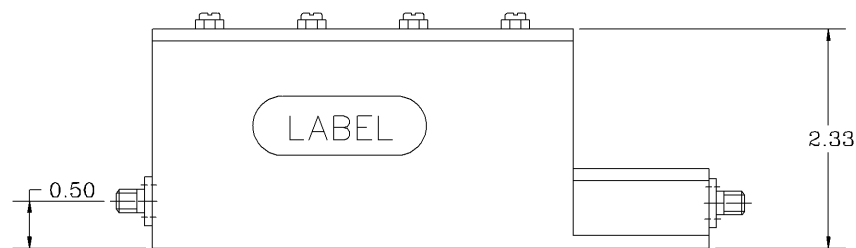


REVISIONS

REV	DATE	APPROVED



Electrical Specifications

*1dB Pass Band Range [MHz]	: 1570 to 1580
*Pass Band Insertion Loss [dB]	: <2.5
*Pass Band Ripple [dB]	: <0.4 P-T-P
*Rejection DC to 1565 MHz [dB]	: 45 (Min.)
@ 1585 to 6000 MHz [dB]	: 45 (Min.)
*Pass Band Return Loss [dB]	: -18 (Max.), <1.28:1
*Input/Output Impedance	: 50 ohm
*RF Power Capability CW	: 100 Watts
*Input/Output @ DC Ground Potential	

OPERATING TEMPERATURE RANGE: -0°C TO +70°C

PROPRIETARY DOCUMENT:
THE CONTENTS OF THIS DOCUMENT WITH ALL INFORMATION AND PROCESSES ARE THE SOLE PROPERTY OF G-Way Microwave. THIS DOCUMENT MAY NOT BE DUPLICATED OR DISCLOSED TO ANY PARTY EXCEPT BY EXPRESSLY WRITTEN PERMISSION. THE ONLY AUTHORIZED USE OF THIS DOCUMENT BY A VENDOR IS FOR QUOTE PURPOSES AND SAID VENDOR AGREES NOT TO DISCLOSE ITS CONTENTS TO ANY THIRD PARTY. THIS DOCUMENT IS COPYRIGHTED 1998.

NOTES:

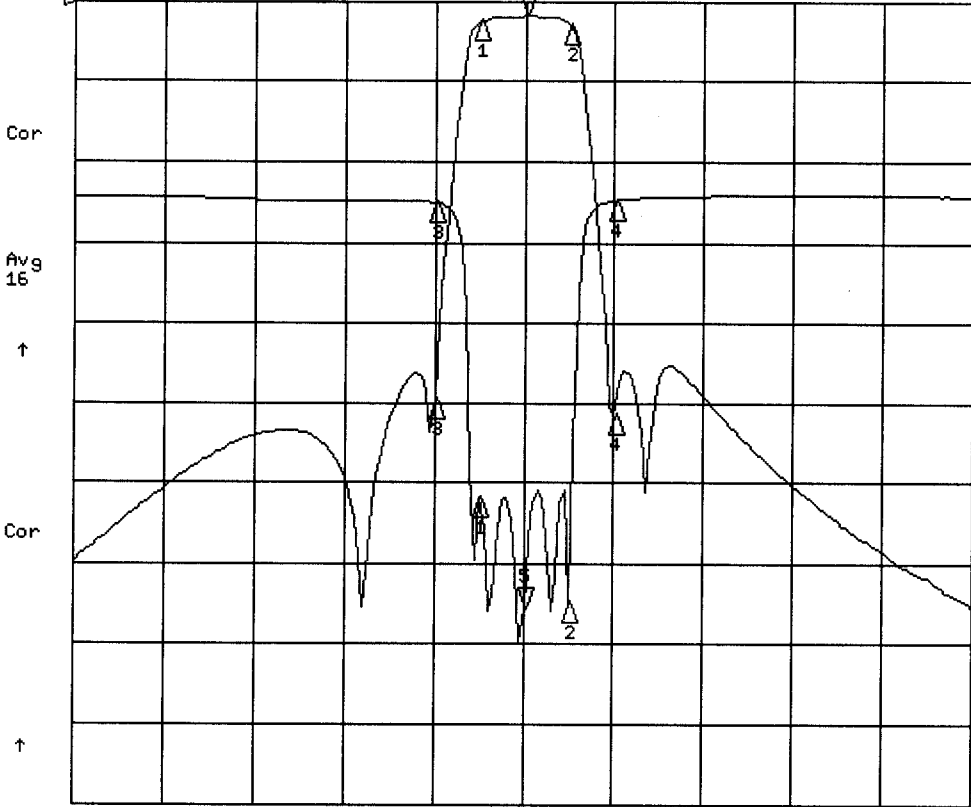
1. BREAK ALL CORNERS & EDGES.005/.010.
2. FINAL FINISH:
EPOXY GRAY - OPTIONAL

DIMENSIONS ARE IN INCHES TOLERANCES ARE		CONTRACT NO:		G-Way Microwave			
ANGLES	DECIMALS	APPROVALS	DATE	TITLE Band Pass Filter 1575 MHz			
± 1°	.X ± .05 .XX ± .01 .XXX ± .003	DRAWN Sivak	03/09	CB1575/10MK-D7			
TREATMENT	CHECKED	ENG.	DESIGN ACTIVITY	SIZE	CAGE CODE	DWG NO:	REV.
FINISH 63/				A	3K1H4	CB1575/10MK-D7-1	0
MATERIAL				SCALE	None		SHEET 1 OF 1

CB 1575/10 MK-D7

2 Mar 2009 16:07:49

CH1 S21 LOG 10 dB/REF 0 dB 5:-1.8121 dB 1 575.000 000 MHz
CH2 S11 LOG 5 dB/REF -18 dB 5:-25.807 dB

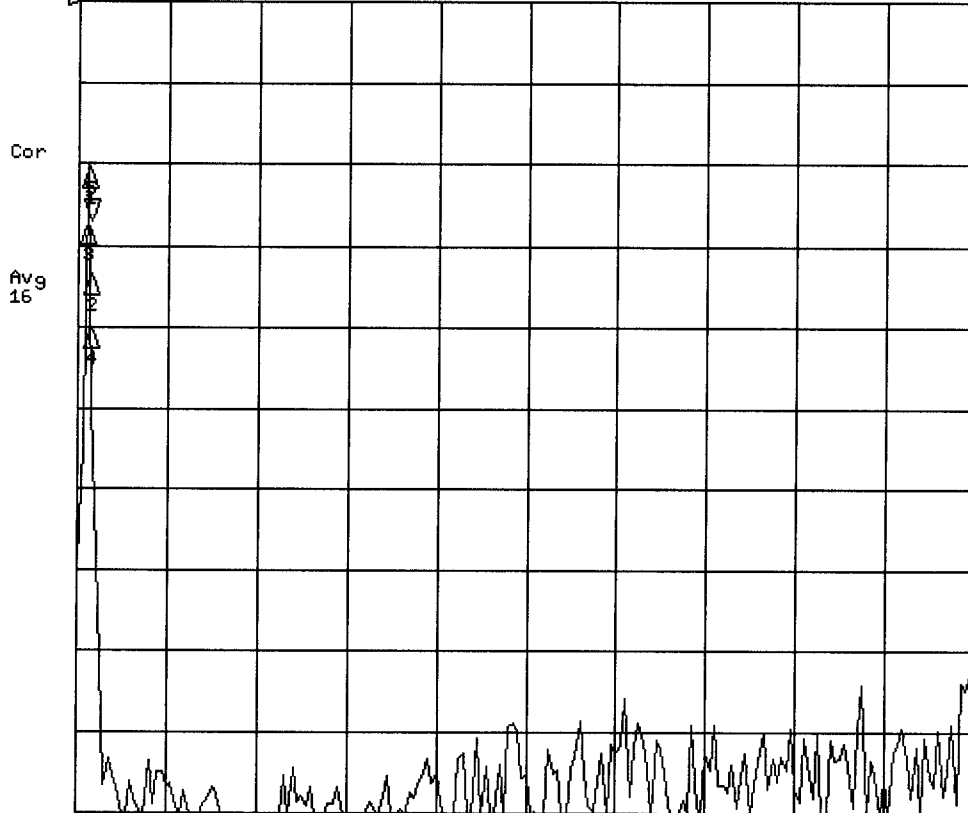


CENTER 1 575.000 000 MHz

SPAN 100.000 000 MHz

2 Mar 2009 16:09:03

CH1 S21 LOG 10 dB/REF 0 dB 5:-27.070 dB 1 575.000 000 MHz



START 1 525.000 000 MHz

STOP 6 000.000 000 MHz