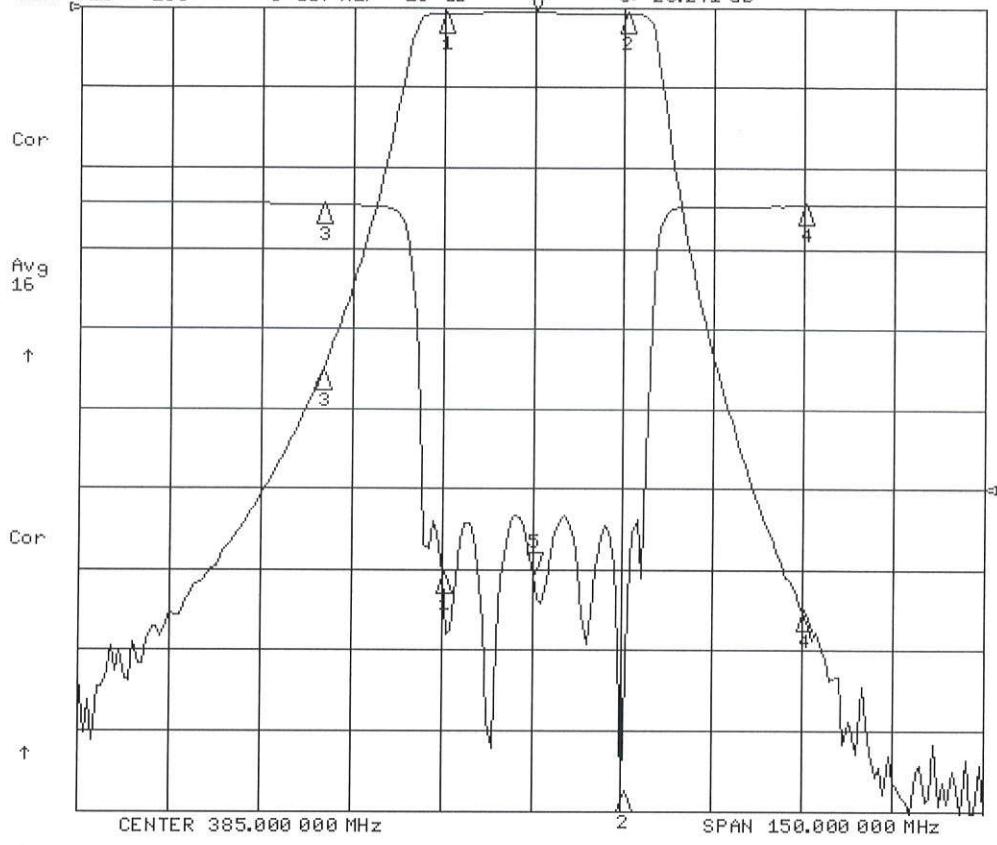


CB385/30SK-FTL2

8 May 2013 13:17:02

CH1 S21 LOG 10 dB/REF 0 dB 5 5:-60.340 dB 385.000 000 MHz
 CH2 S11 LOG 5 dB/REF -18 dB 5 5:-23.241 dB



CH1 Markers

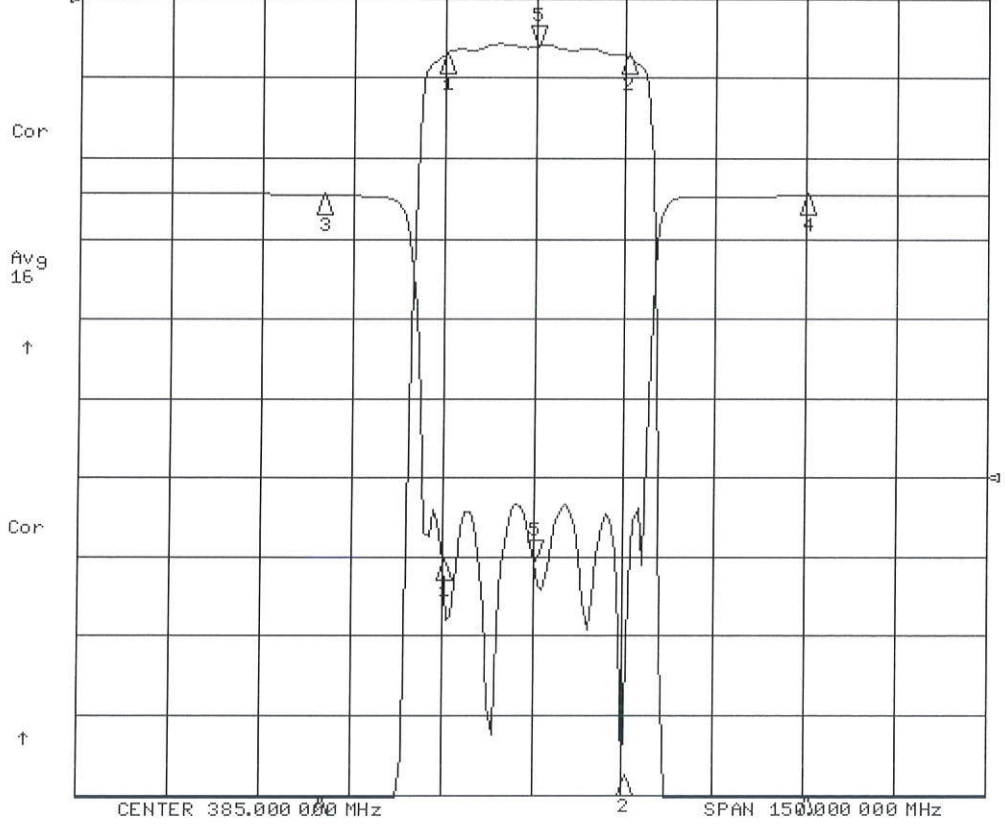
- 1:-70.840 dB
370.000 MHz
- 2:-70.610 dB
400.000 MHz
- 3:-45.146 dB
350.000 MHz
- 4:-75.088 dB
430.000 MHz

CH2 Markers

- 1:-23.302 dB
370.000 MHz
- 2:-36.863 dB
400.000 MHz
- 3:-27.740 dB
350.000 MHz
- 4:-32.960 dB
430.000 MHz

8 May 2013 13:17:07

CH1 S21 LOG 1 dB/REF 0 dB 5 5:-60.410 dB 385.000 000 MHz
 CH2 S11 LOG 5 dB/REF -18 dB 5 5:-23.234 dB



CH1 Markers

- 1:-70.840 dB
370.000 MHz
- 2:-70.430 dB
400.000 MHz
- 3:-45.160 dB
350.000 MHz
- 4:-75.167 dB
430.000 MHz

CH2 Markers

- 1:-23.295 dB
370.000 MHz
- 2:-36.856 dB
400.000 MHz
- 3:-27.640 dB
350.000 MHz
- 4:-32.830 dB
430.000 MHz

8 May 2013 13:25:49

CH1 S21 LOG 5 10 dB/REF 0 dB

5: -2.8345 dB 385.000 000 MHz

Cor

Avg
16

↑

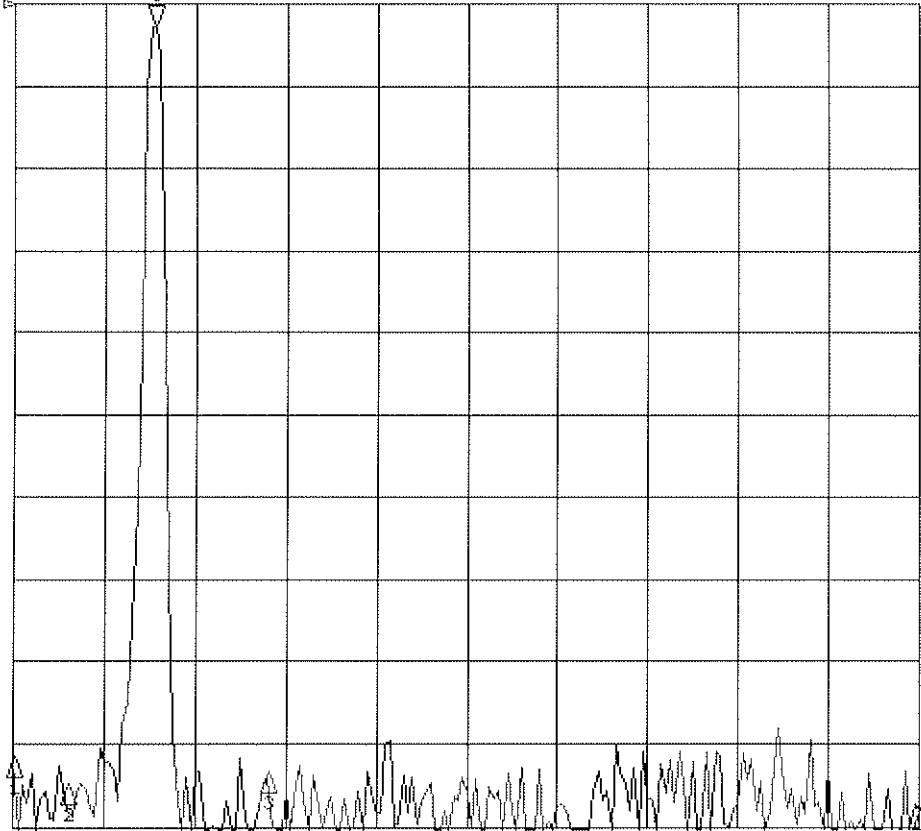
CH1 Markers

1: -91.587 dB
1.00000 MHz

2: -94.968 dB
150.000 MHz

3: -93.535 dB
700.000 MHz

4: -97.978 dB
2.50000 GHz



START 1.000 000 MHz

STOP 2.500 000 000 MHz 4